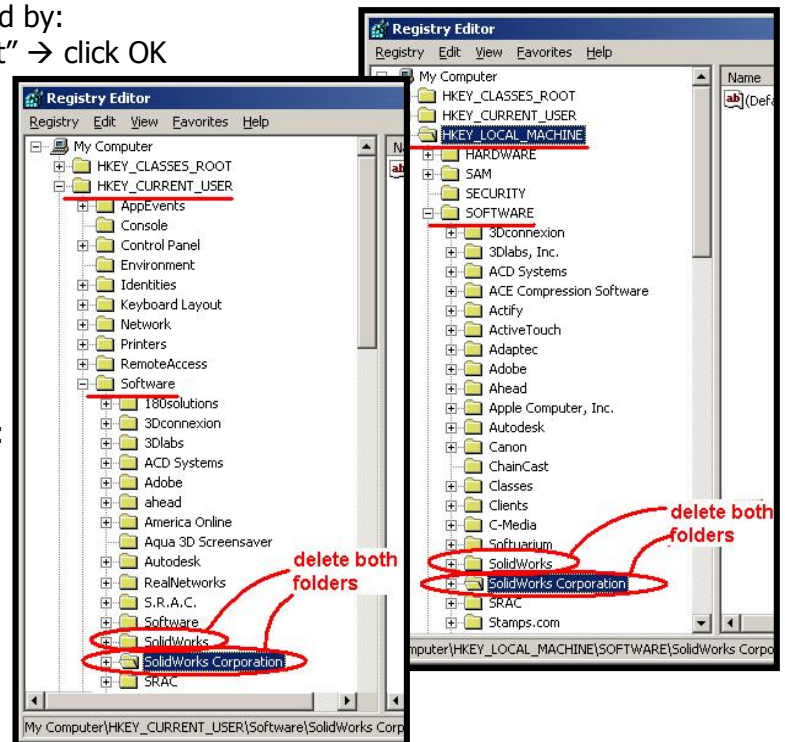
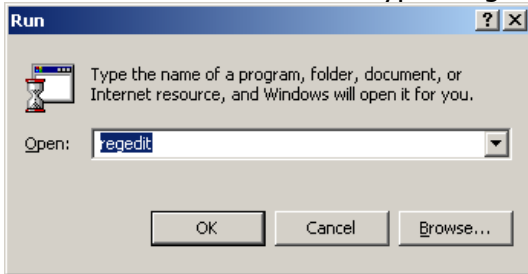


How to- Completely Uninstall SolidWorks

* Critical Items

1. Backup all SolidWorks settings (Copy Settings Wizard), engineering data, and templates.
2. * Deactivate SolidWorks by clicking **HELP → TRANSFER LICENSE (Not Required on Network licenses)** *
3. Run SolidWorks' **Uninstall**. Click Start button → Settings → Control Panel → Add & remove programs.
 * **DO NOT** continue if you receive errors during uninstall – call EngATech tech support *
4. Download and extract this http://www.engatech.com/ftp/SolidWorks_Uninstallation_Cleanup.zip to the local computer's hard drive...
5. Run the batch file (SolidWorksXXXX_Uninstallation_Cleanup.bat) to delete registry keys and program file folders.
 Make sure both the batch file & reg file are on the user's local hard drive, do NOT run off a network, unless EngATech Support has modified your batch file to be compatible with network drives

- a. Double check that the above script worked by:
- b. Click Start button → Run → type "RegEdit" → click OK



- c. Navigate to:
HKEY_CURRENT_USER\Software...
 Check that the following folders are gone:
 ... \SolidWorks
 ... \SolidWorks Corporation
 ... \edrawings
 ... \MoldFlow
 ... \DriveWorks Ltd
 ... \SolidWorks Backoffice
 ... \SRAC
(ref. image to the right)

- d. Check the same above folders are gone under:
HKEY_LOCAL_MACHINE\Software... *(ref. image to the far right)*

- e. Check to see if the SolidWorks directories under "c:\program files" have been removed

6. REBOOT
7. * Turn off any anti-virus or anti-spyware software! * as well as other programs (email, word, etc...)
8. Reinstall SolidWorks or install next major release & apply any service packs if needed...
9. Restore settings from step 1 by running "Copy Settings Wizard" -OR- apply EngATech's implementation settings file to point everything back to the SolidWorks Common Data folder on the network if needed.